



ENGINEERING DOBERSEK®

BackFill System REFERENCE

BACKFILLING PLANT

Services & scope of supply

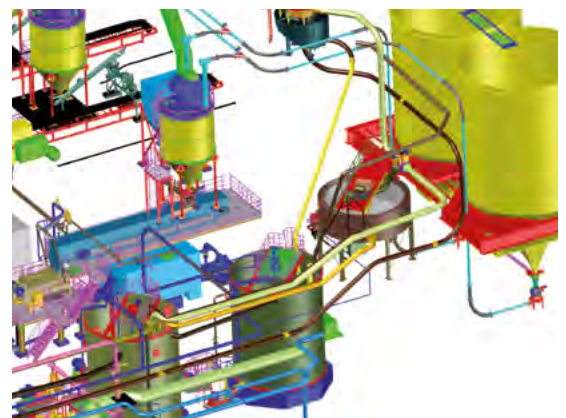
Three slurry pumping stations with 2 serially connected high pressure slurry pumps for the transfer of the flotation tailings to the concrete factory 3.5 kilometres away.

Basic and detail engineering incl. conversion according GOST, delivery of equipment incl. steel construction, construction on-site, installation, commissioning, training of personnel, acceptance by mining authority including 72h test run.

- > Two plants for backfilling
- > Supply of a high pressure pump for the transport of solids
- > Hydrocyclone plant ContiClass®System with cyclone battery to separate the fine fraction of the tailings for the thickener and the grain fraction directly to the mixer

BENEFITS:

- > Reduction of: disposal site for flotation tailings, slag deposit, water consumption – the previously consumed water can be used for other applications without further processing; power consumption
- > Closing of gravel recovery and gravel production
- > Considerably higher: availability of the plant, quality of the concrete mixtures, reproducibility of concrete recipes
- > Significant reduction of space requirement
- > Significant noise reduction



Backfilling plant layout



BackFill System
BACKFILLING

Technical data

- > Plant 1: 250,000 m³ concrete mix per year
- > Plant 2: 1,000,000 m³ concrete mix per year
- > Treatment of 2,050,000 t tailings per year
- > Transport of solids over a distance of 3.5 km

CAPACITY OF 2nd
PLANT

1,000,000

m³ OF CONCRETE MIX
PER YEAR



Slurry pumping station



Rotary valve



Air supply system



Gland water sealing system, rubber lined surge tank



Cyclone battery of ContiClass® System

Engineering Dobersek GmbH
Vorster Straße 493
41169 Mönchengladbach
Germany
www.dobersek.com

t +49 2161 901 08 - 0
f +49 2161 901 08 - 20
e info@ed-mg.de

Engineering Dobersek GmbH offers the entire spectrum of turnkey plant engineering in the fields of mining, mineral processing, metallurgy, power as well as special plants. Our services range from - depending on individual customer requirements - from research and development, engineering, procurement, construction up to after sales service. Find out more on www.dobersek.com

Engineering Dobersek® is a registered trademark.
BackFill System is a registered trademark of Engineering Dobersek GmbH.